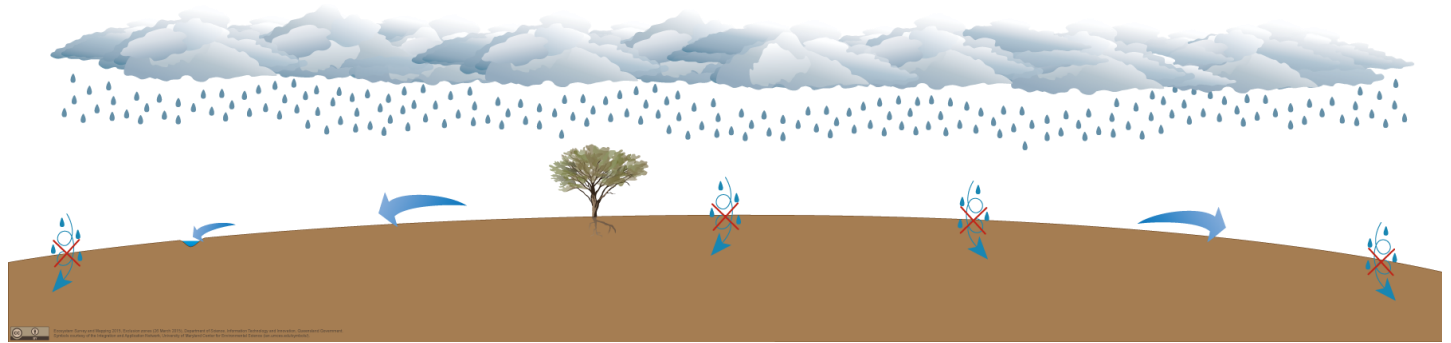


# Pictorial conceptual model 'exclusion zones'

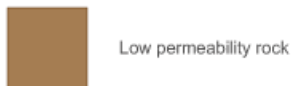
Version 1.5

## Exclusion zones

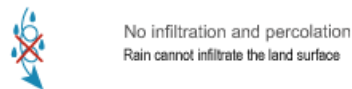
Some rocks (such as some fine-grained sedimentary rock, metamorphic rock and igneous rock) and unconsolidated sediment (such as clay deposits) have low permeability. Due to this low permeability, much of the water from rainfall is unable to infiltrate the land surface and is rapidly shed as surface water run-off. These low permeability rocks and sediments do not have enough inter-granular pore space, voids or fractures to contain ecologically significant groundwater or enable flow. As a result of this, GDEs are not located in areas within these low permeability rocks or sediment.



### Geology legend



### Groundwater hydrology legend



### Flora legend



## Citation

Queensland Government (2017) *Pictorial conceptual model 'exclusion zones': version 1.5*, Queensland Government, Brisbane.